

Glenway Community Meeting



Monday February 1, 2010

7:30pm

Newmarket Theatre

Chris Emanuel

Councillor Ward 7

Purpose

- Update residents on the status of Glenway Country Club
- Outline relevant facts and new information
- Establish next steps
- Q&A

The Era-Banner Sunday, March 9, 2008

Town will fight to maintain greenspace

BY PATRICK MANGION

Staff Writer

Newmarket Councillor Chris Emanuel didn't waste time acknowledging the elephant in the room at a packed community meeting in Newmarket yesterday.

A standing-room-only crowd that swelled to nearly 500

residents was still filtering into the gymnasium at St. Nicholas school when he gave Glenway area residents the assurance they were looking for—he would fight to protect the value of their homes and ensure greenspace was protected.

Facts

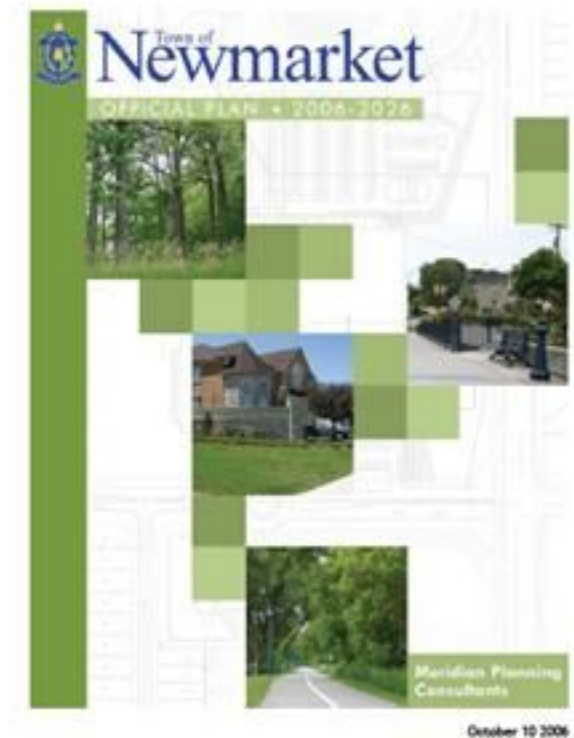


- Glenway Country Club has been sold to Marianneville Developments Ltd. a partnership between the Kerbel Group and Lakeview Homes
- They have expressed a desire to maintain a 'Golf Component'
- They do plan to make an application to rezone and develop some lands in the future

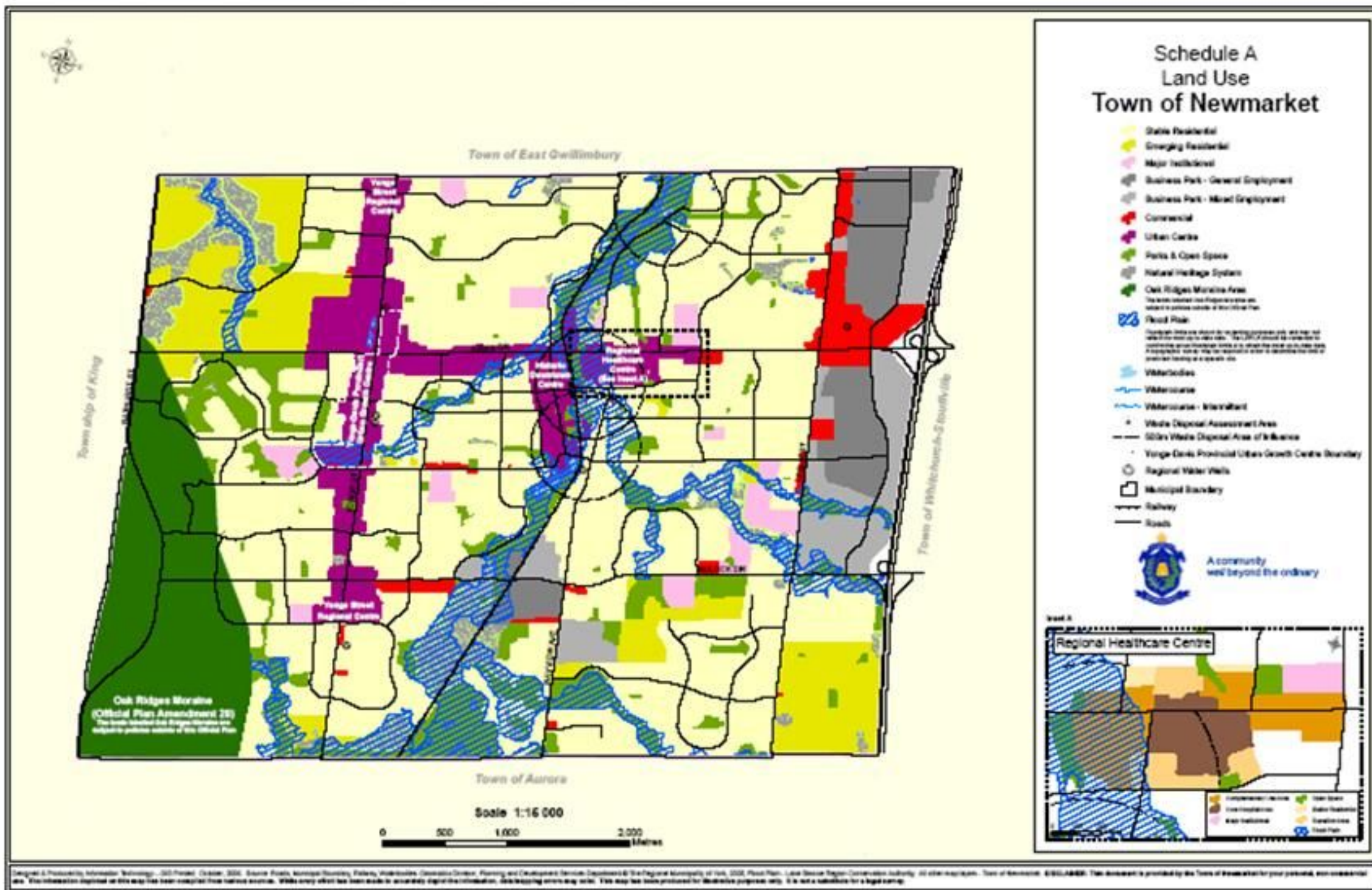
Official Plan



- Planning decisions are based on the approved Official Plan 2006-2026
- The Official Plan (OP) has been approved by the Region of York.

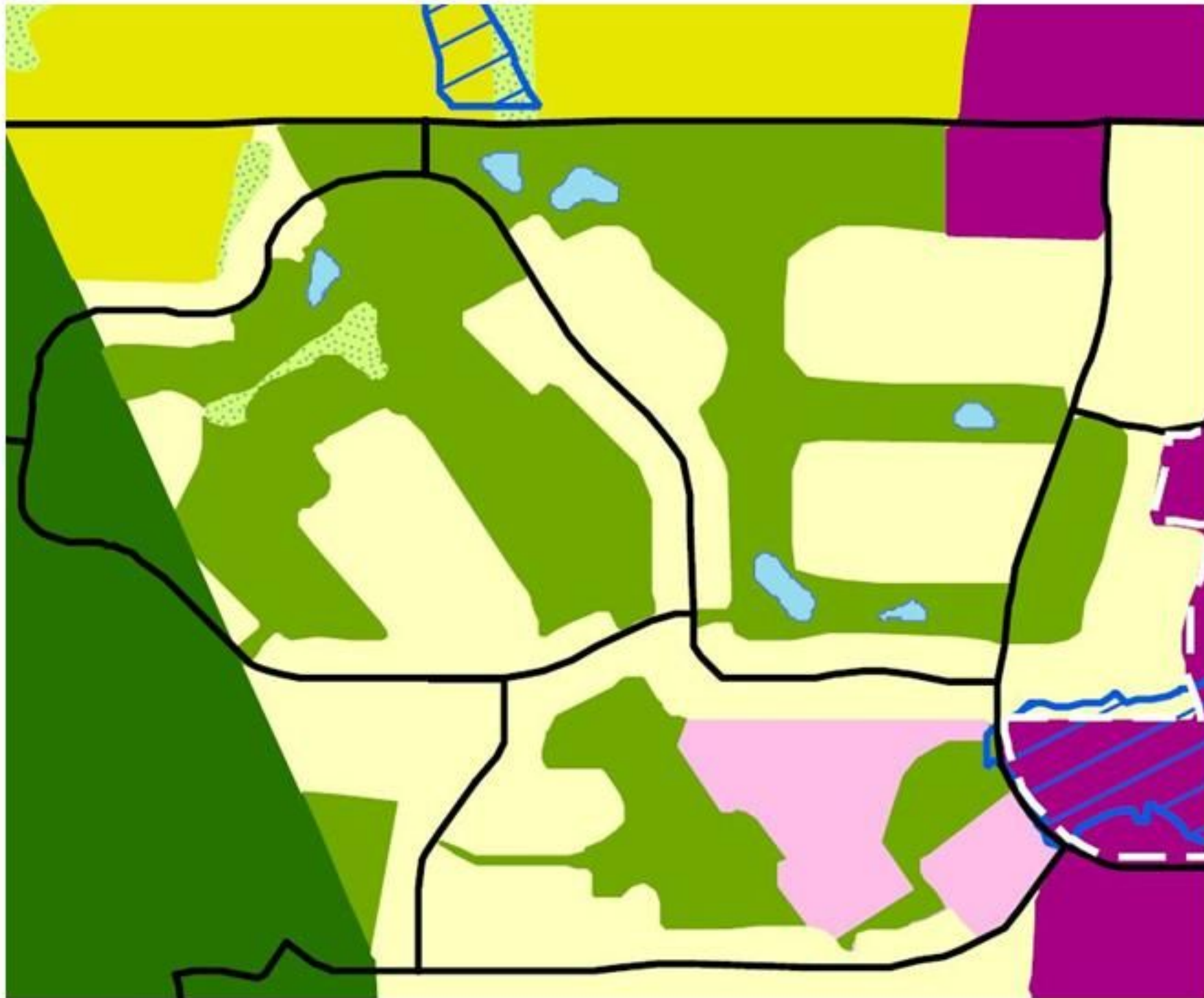


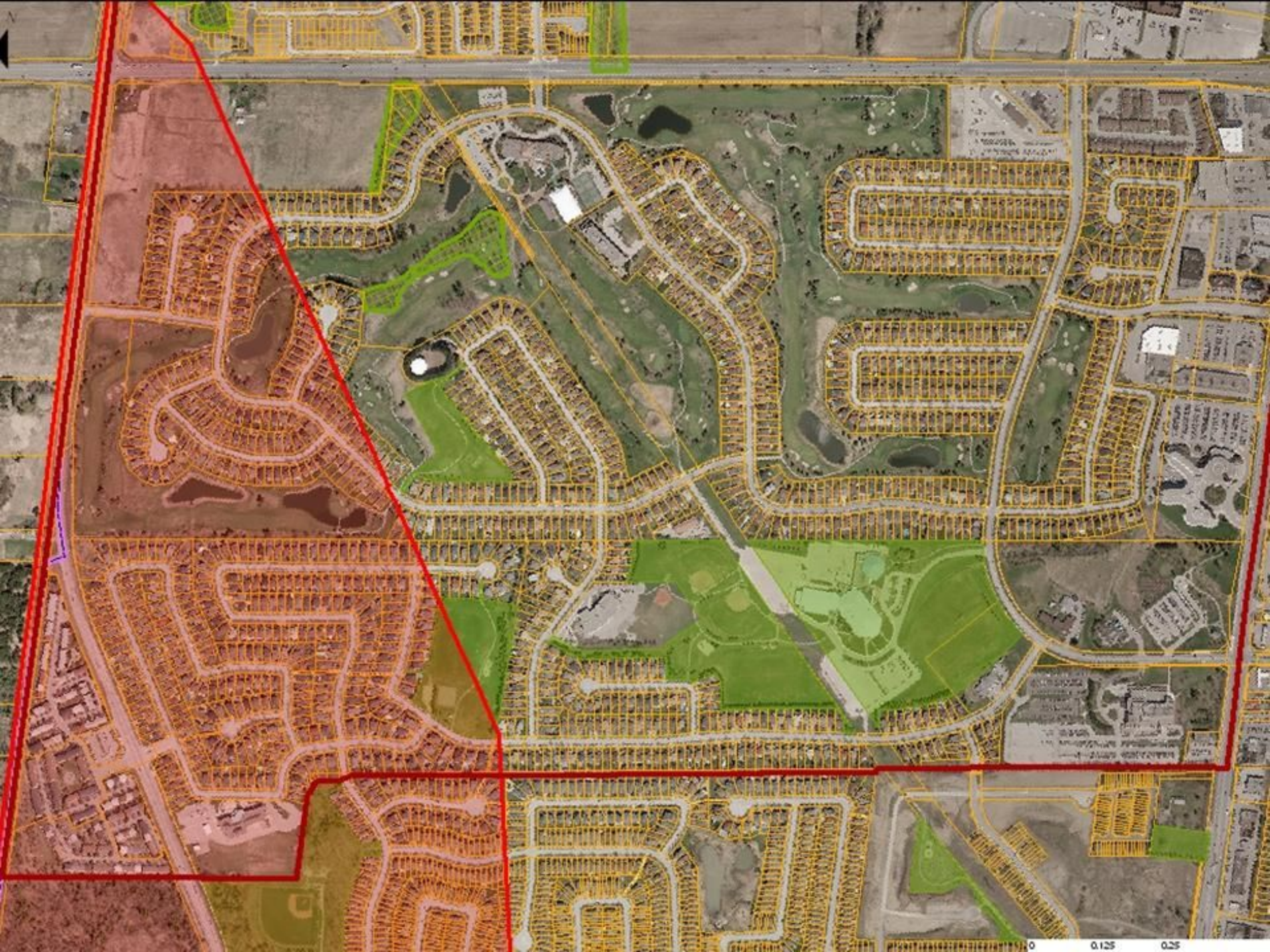
2006 Official Plan



Map of Newmarket, Ontario, Canada, 2006. Source: Esri, ArcGIS, Microsoft, Bentley, Autodesk, Geomatics, Planning and Development Services Department of the Regional Municipality of York, 2006. Flood Plain: Land Service Region, Conservation Authority. All other map data: Town of Newmarket, ©ESRI, 2006. This document is provided by the Town of Newmarket for your personal, non-commercial use. This information is derived from various sources. While every effort has been made to ensure the accuracy of this information, the Town of Newmarket does not assume any liability for errors or omissions. This map has been prepared for illustrative purposes only. It is not a substitute for a legal survey.

2006 Official Plan – Glenway





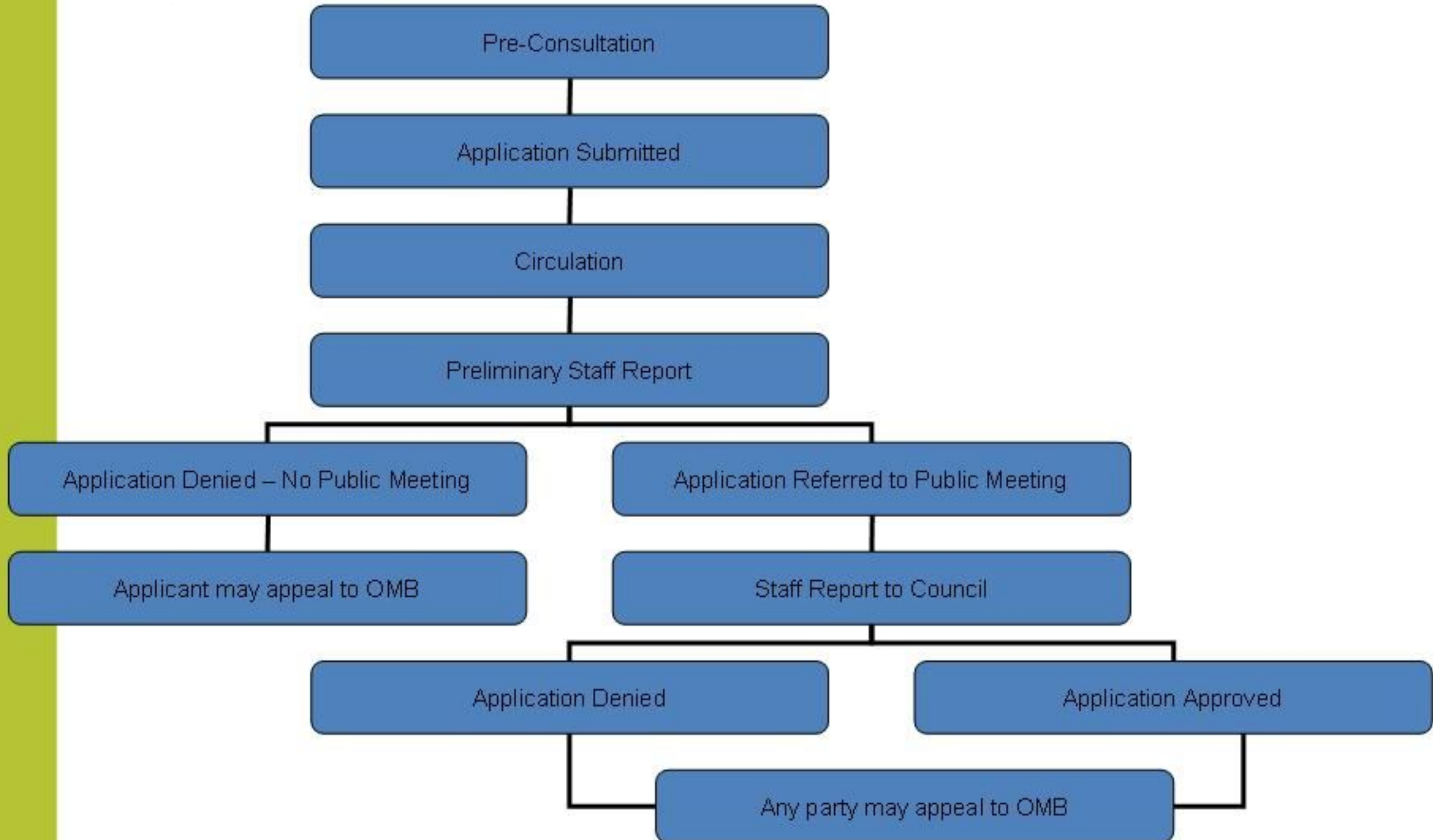
Zoning By-Law



- The Glenway Golf Course is currently zoned “Open Space and Conservation Zone” by by-law 1981-96
- Permitted uses include:
 - golf course
 - driving range
 - range of agricultural uses
 - hotel (added via By-Law 1982-77)
 - clubhouse (added via By-Law 1982-77)
 - museums
 - indoor/outdoor rec facilities (added via By-Law 1982-77)
 - banquet hall (added via By-Law 1993-145)
 - bird/animal sanctuaries
 - pavillions
 - public recreation centre
 - parks

Application Process

Application Process



Ontario Municipal Board



- Provincially appointed appeal board
- Review appeals to municipal planning decisions
- Any party may appeal

Servicing Allocation – Context



- Any new development must be allocated appropriate water and sewer allocation
- Service Allocation Policy as adopted by Newmarket Council – August 31, 2009
- Service Allocation going forward 2013 and beyond

Summary of Barriers

- Designation of lands in the Official Plan/Zoning By-law
- Town's desire to see lands intensify and develop elsewhere
- Oak Ridges Moraine
- Protected Woodlots
- Storm Water Management Ponds
- Hydro Right-of-Way
- Easements
- Water/Sewer Allocation

Next Steps



- Launch of today's petition showing community support for the continued designation of the Glenway Golf Course lands as Parks and Open Space
- Collaborate with those interested in the establishment of a community association to ensure optimal timing, process and partnerships
- Determine who from the community are able to volunteer and work in a more active capacity.

Mayor & Regional Councillor



Comments from

Mayor Tony Van Bynen

&

Regional Councillor John Taylor

Going Forward



- I will continue to mail updates and send notices at key milestones
- Please register all contact info tonight
 - Please PRINT email addresses clearly
- Ensure friends/neighbours are aware and encourage them to sign-up for updates via my website

Key Contact Info



www.chrisemanuel.com

cemanuel@newmarket.ca

(905) 716-0093

QUESTIONS